



GMT MONTHLY MEMBERSHIP PROGRESS REPORT

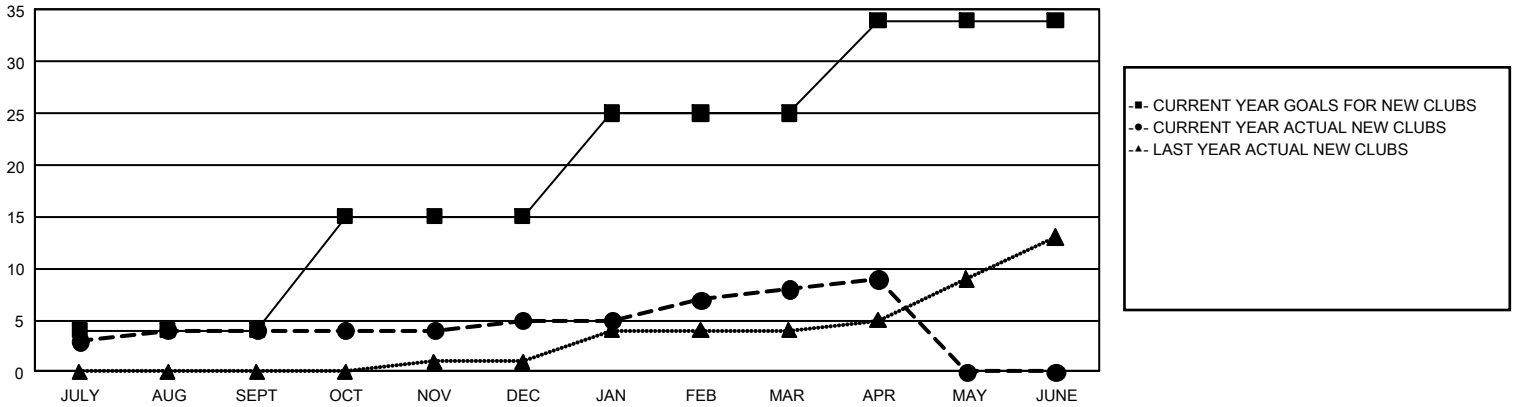
GAT Constitutional Area 2

Results as of: 4/30/2026

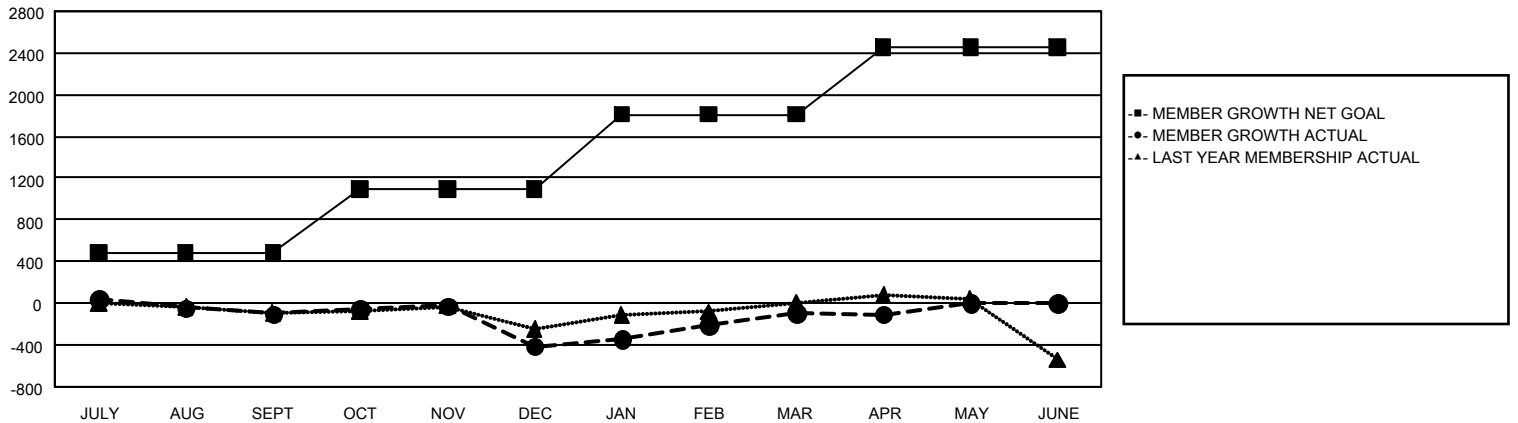
REPORT DOES NOT INCLUDE CLUBS IN UNDISTRICTED AREAS.

Clubs				Members			
RESULTS FOR 2025-2026				RESULTS FOR 2025-2026			
QUARTER	NEW CLUB GOAL	NEW CLUBS	DROPPED CLUBS	QUARTER	MEMBER GROWTH NET GOAL	MEMBER GROWTH ACTUAL	DROPPED MEMBERS ACTUAL (including transfers)
JULY/AUG/SEPT	4	4	3	JULY/AUG/SEPT	483	669	652
OCT/NOV/DEC	11	1	20	OCT/NOV/DEC	609	908	1,079
JAN/FEB/MAR	10	3	5	JAN/FEB/MAR	718	1,068	603
APR/MAY/JUNE	9	1	0	APR/MAY/JUNE	647	253	230

GOALS AND ACTUAL NEW CLUBS CUMULATIVE



GOALS AND ACTUAL MEMBERS CUMULATIVE



DROPPED CLUBS: 28	682 CLUBS OF 1,170 ADDED 1 OR MORE NEW MEMBERS	<u>GENDER DISTRIBUTION</u> MALE 16,125 (62.23%) FEMALE 9,766 (37.69%)
<u>DROPPED MEMBERS</u> DECEASED 346 CLUB CANCELLED 188 OTHER 2,018 <hr/> TOTAL 2,552	CLICK HERE FOR CUMULATIVE MEMBERSHIP DATA	TOTAL FAMILY UNIT MEMBERS 4,628 FAMILY MEMBERS PAYING HALF DUES 2,376